



**DECOR LAM**

SUPERFICIES DE INGENIERÍA

Lago Chiem No. 64,  
Col. Ahuehuetes, Anáhuac  
Alcaldía: Miguel Hidalgo C.P.  
11320, CDMX

**55 5554-2577 CON 10 LINEAS**

**DONDE COMPRAR**



# ColorCore<sup>®</sup> Compact

*by FORMICA GROUP*



# Beauty is absolute

Versatile, practical and beautiful, ColorCore® Compact is our latest self-supporting material that combines on trend surface designs with a structural, colour matched core that provides a homogeneous colour all the way through.

Transform your interiors with the ColorCore Compact range and make your design element the centrepiece of the room by selecting natural or contemporary decors, complementing textures and a colour matched core for a clean finish and beautiful edges.

With the solid grace of a natural material, but with the durability you would expect from a solid grade laminate, the colour matched, waterproof core allows design features to be engraved into the surface, enabling endless creative possibilities that stand the test of time.



# Properties

ColorCore® Compact provides a real alternative to natural and engineered stone, without having to compromise on aesthetic, finish, quality or durability.

**Personalise surface and edge treatments:** Thanks to its complementing, solid coloured core you can engrave, carve and router to create unique and original surfaces as well as adding interesting edging details.

**Durable:** Impact and abrasion resistant making it ideally suited to withstand even high traffic areas.

**Non-porous:** As a fully waterproof material that has non-porous properties, you can wipe away spillages from everyday products to keep it clean and looking pristine.

**Hygienic:** The inert properties of the surface stop bacteria and mould from taking hold, ideal for public spaces.

**Simple and low cost installation:** ColorCore Compact can be cut on site and installed using standard tools, which eliminates the time and expense of complex measuring and installation equipment, usually associated with stone and engineered stone alternatives.



The mark of  
responsible forestry







# Natural whites

Add a touch of timeless elegance to your project with our range of cool whites. Available as a solid Polar White, in a variety of textures to bring it alive. There is also a selection of natural and engineered stone designs which have been matched with complementary textures by our global design team. Versatile and universally popular, white suits all rooms and future-proofs your design for years to come.

This range features a selection of contrasting finishes, from luxurious high gloss, to more subtle and sophisticated matte.



Reception

**F2255** Polar White

Matte 58, Satin NDF, Gloss, Plex





**F3460** Calacatta Marble

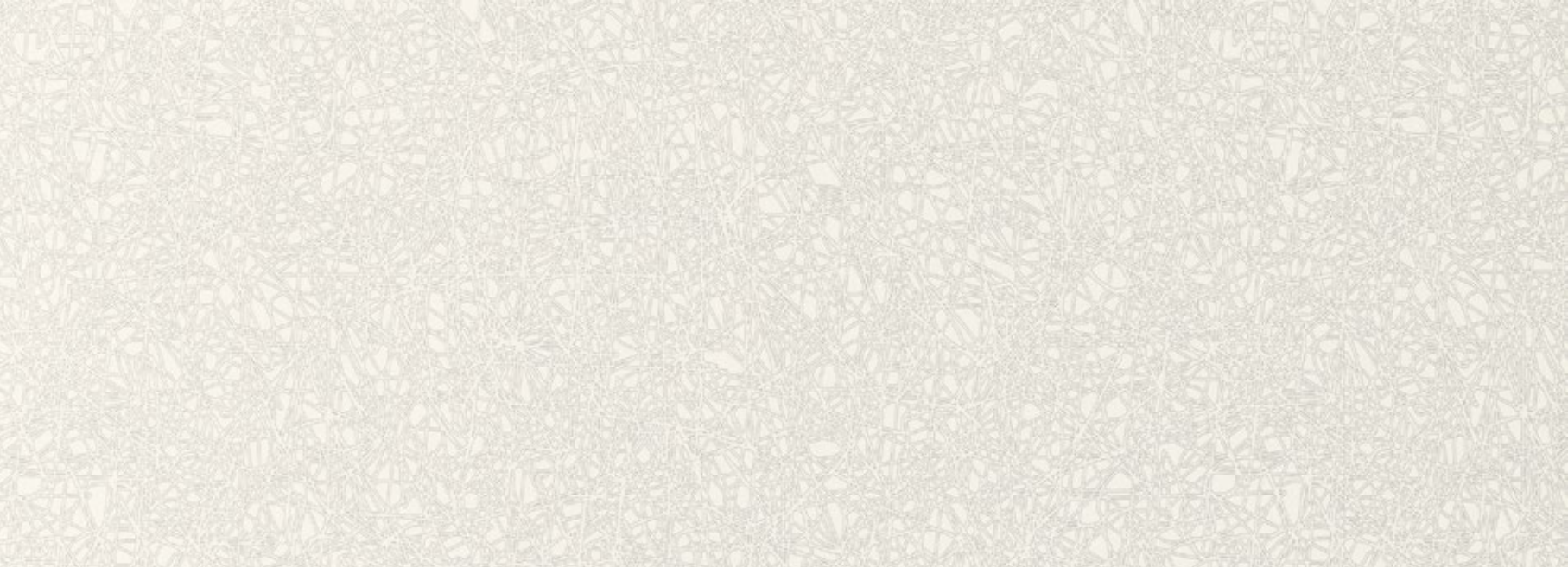
Satin NDF





**F8841** White Ash

Naturelle



**F5270** Geo White

Matte 58





**F6314** Neo Cloud

Satin NDF





# Cool greys

On trend and arguably one of the most enduring colour palettes, grey. Perfectly neutral, harmonious, effortlessly cool and immediately enhances all others colours around it.

Make the rest of your design features stand out by cleverly using a colour that takes a back-seat, and lets complementary accents take centre stage.

Choose from a range of finishes and textures to instantly add flair and sophistication to your project and create a tonally soothing ambience.



















# Modern blacks

Everlastingly popular and always in fashion, our range of blacks state confidence and understated chic. Not only do our black surfaces look and feel luxurious, they are ideal for traditionalists and modern designers alike, combining practicality with a hint of timeless class.

Available with complementary textured finishes, set your project apart with a bold look that projects good taste.









**F9485** Nero Grafite

Satin NDF



**F8848** Blackened Legno

Naturelle



**F5283** Dogbone Storm

Satin NDF













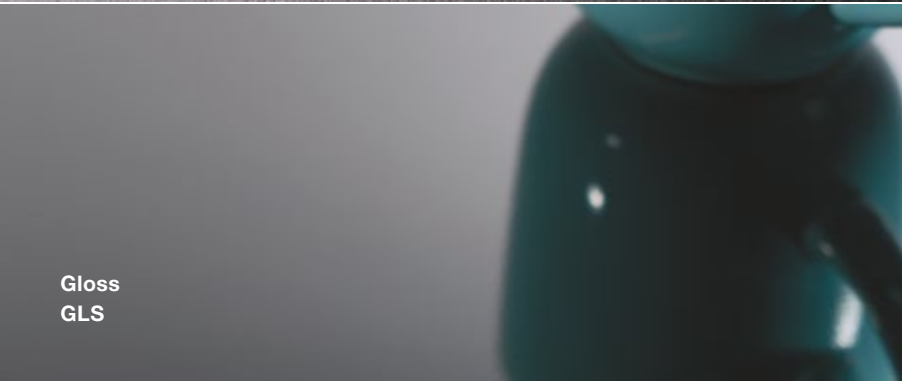




Matte 58  
MAT



Satin NDF  
NDF



Gloss  
GLS



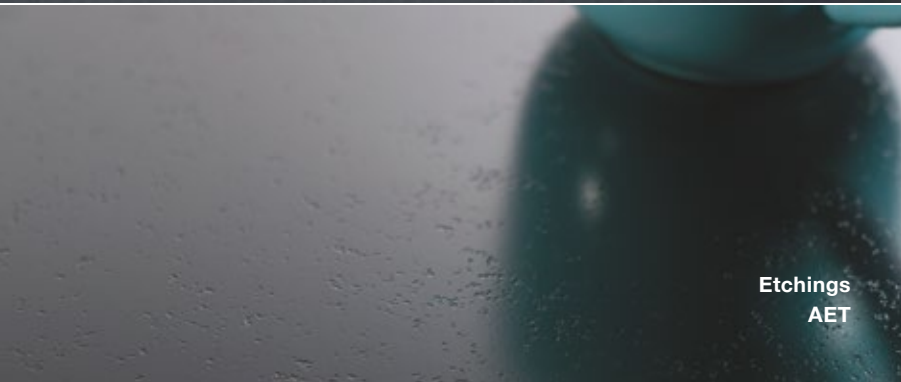
Scovato  
SCO



Plex  
PLX



Naturelle  
NAT

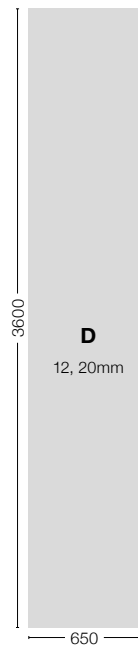
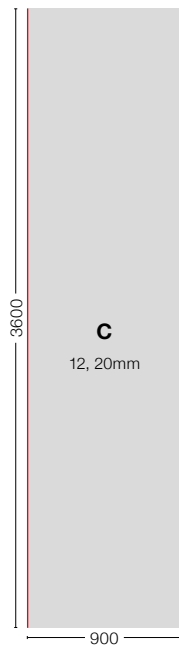
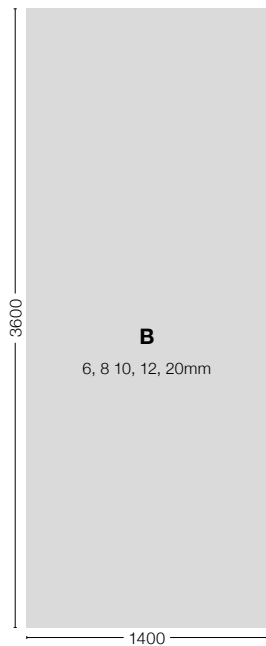
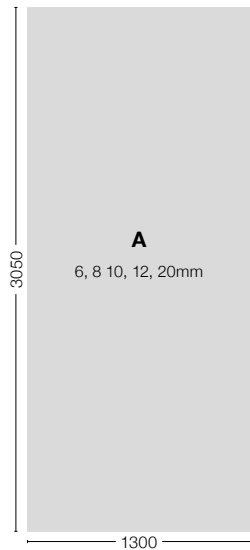


Etchings  
AET



Lustre  
LUS

## Size and availability



Unfinished edge profile



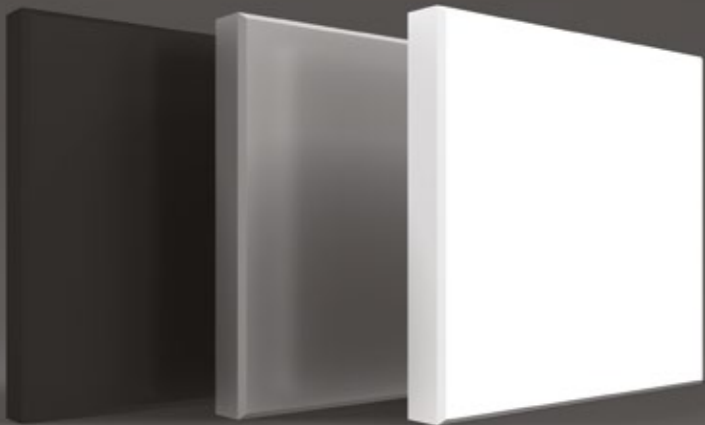
Finished edge profile



Sizes 3600 x 900 and 3600 x 650 come with finished edges as highlighted in red on the adjacent illustration.

They incorporate a slight chamfer and polished edge, and are well suited for kitchen worktops, breakfast bars and furniture applications.

Code	Decor	Core	NCS®	RAL	Light Reflectance Value	A	B	C	D
						3050 x 1300 mm	3600 x 1400 mm	3600 x 650 mm	3600 x 900 mm
F0193	Xenon	Grey			47.2	MAT	-	-	-
F1535	Tornado	Grey	S 4500-N	7036	32.3	MAT, NDF, GLS	-	-	-
F1994	Fox	Grey	S 3500-N	7004	42.4	NDF	NDF	NDF	NDF
F2253	Diamond Black	True Black	S 9000-N	9011	6.7	MAT, GLS, PLX	-	-	-
F2255	Polar White	White	S 0500-N	9016	85.7	MAT, NDF, GLS, PLX	NDF	NDF	NDF
F2699	Black Granite	True Black				-	LUS	LUS	LUS
F3460	Calacatta Marble	White			63.8	NDF	NDF	NDF	NDF
F3476	Jet Sequoia	True Black			8.6	AET	AET	AET	AET
F5270	Geo White	White			69.1	MAT	-	-	-
F5283	Dogbone Storm	True Black			11.0	NDF	-	-	-
F6314	Neo Cloud	White				NDF	NDF	NDF	NDF
F6316	Neo Tornado	Grey				NDF	NDF	NDF	NDF
F6362	Concrete Formwood	Grey			49.0	-	SCO	SCO	SCO
F6696	Carrara Bianco	White				NDF	NDF	NDF	NDF
F6698	Paloma Polar	White			72.9	NDF	-	-	-
F8830	Elemental Concrete	Grey			38.5	-	SCO	SCO	SCO
F8833	Elemental Graphite	True Black			13.2	-	SCO	SCO	SCO
F8841	White Ash	White			69.7	NAT	-	-	-
F8848	Blackened Legno	True Black			8.0	NAT	-	-	-
F9485	Nero Grafite	True Black				NDF	NDF	NDF	NDF



Lago Chiem No. 64,  
Col. Ahuehuetes, Anáhuac  
Alcaldía: Miguel Hidalgo  
C.P. 11320, CDMX  
55 5554-2577 / 55 5554 9621

**DONDE COMPRAR**



ColorCore® Compact

by FORMICA GROUP

**formica.com**